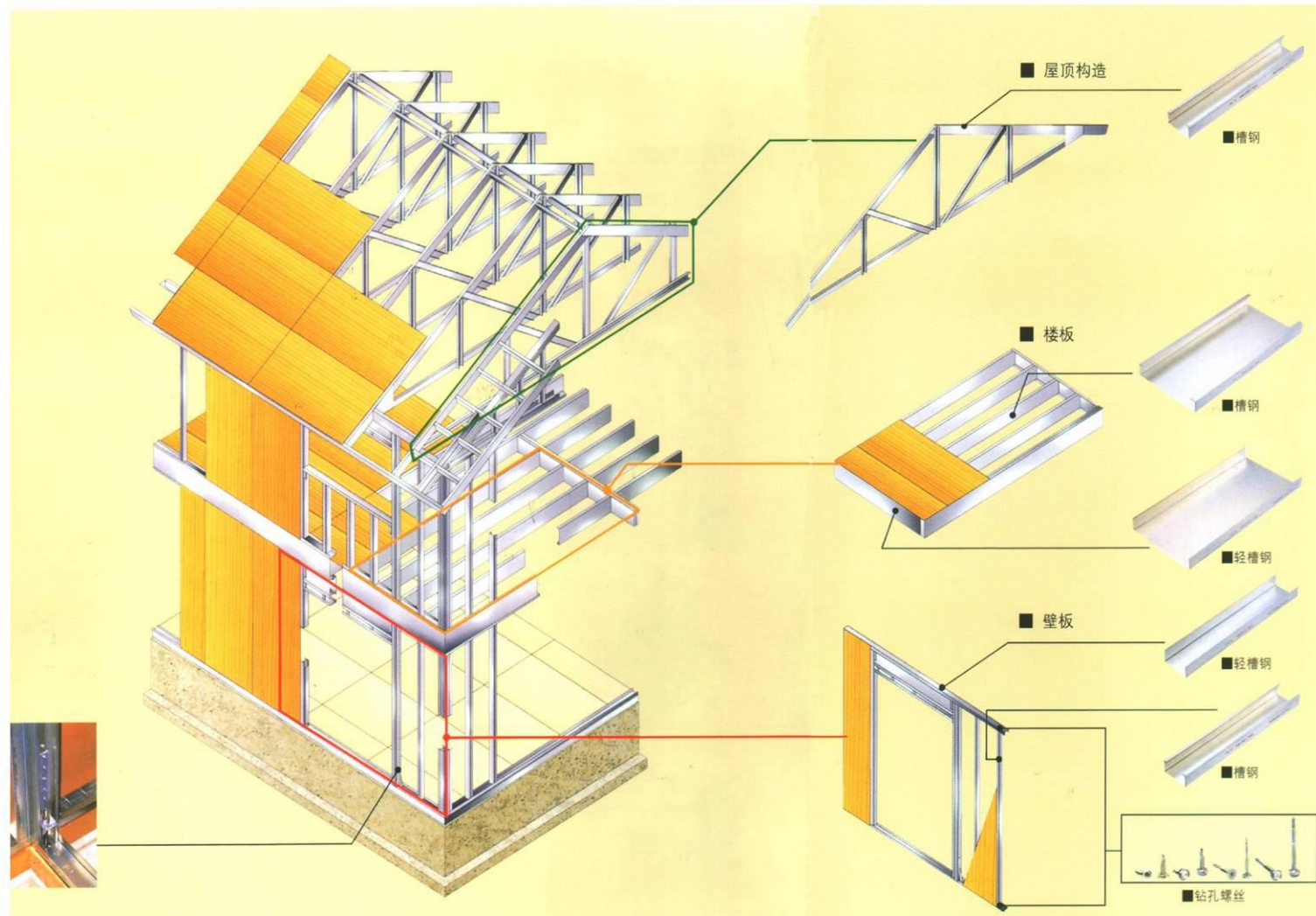


VINTECH Prefab Houses

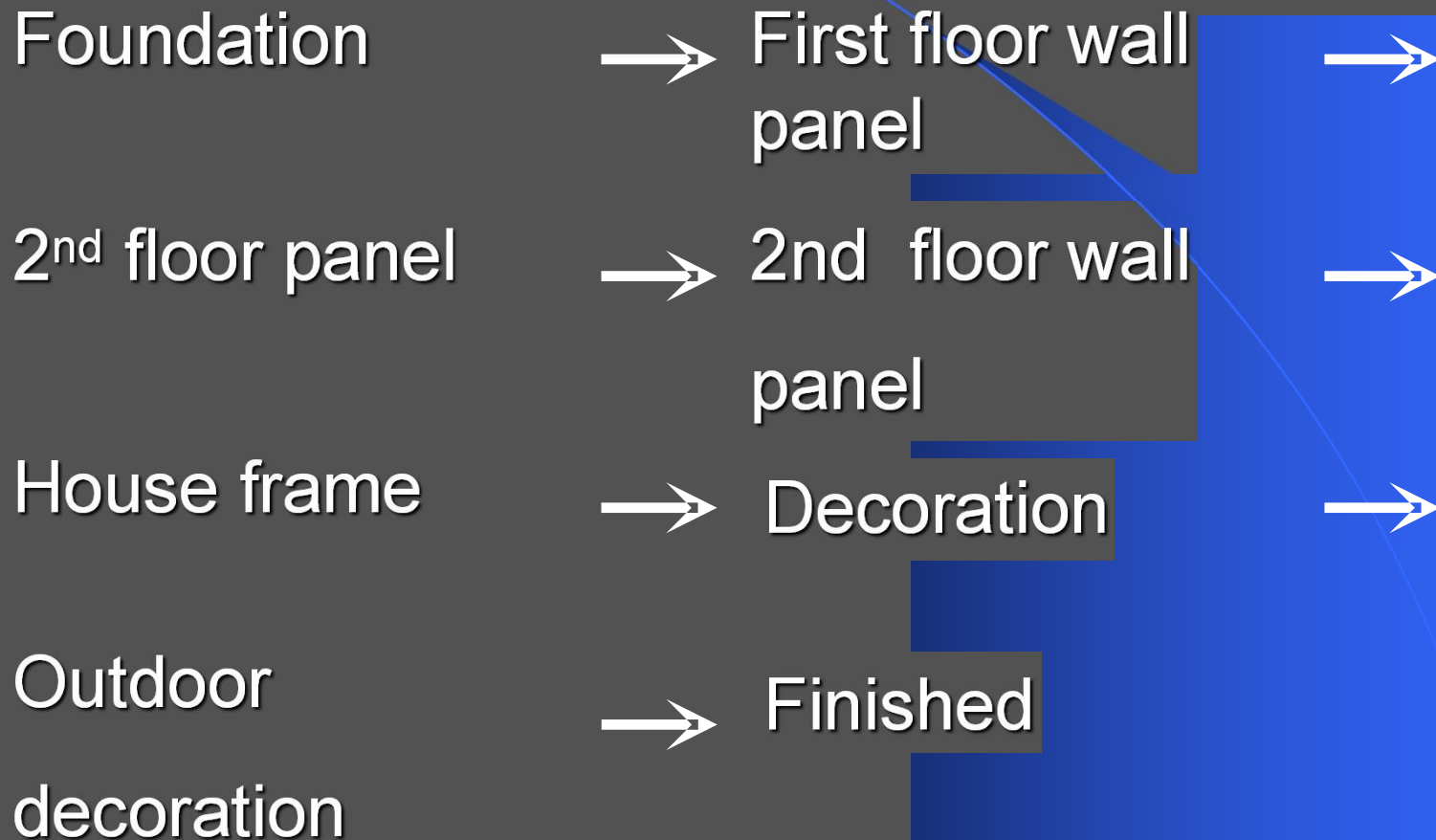


VINTECH
VINAIXA Technologies

● Structure drawings



● Installation steps



Foundation

● Concrete foundation

Similar as traditional house-construction, however, its weight of our house is only 16% to 25% weight of traditional house.





● Concrete Iron Fixed



● Fix the mould

Ensure the right size and thickness of foundation



● Embedded bolt

Adopt M16 bolt and fixed accessories



● Cementing



● Foundation ready and insulation work

When the foundation is ready, we adopt 40mm XPS board to effect insulation work.



First floor wall panel

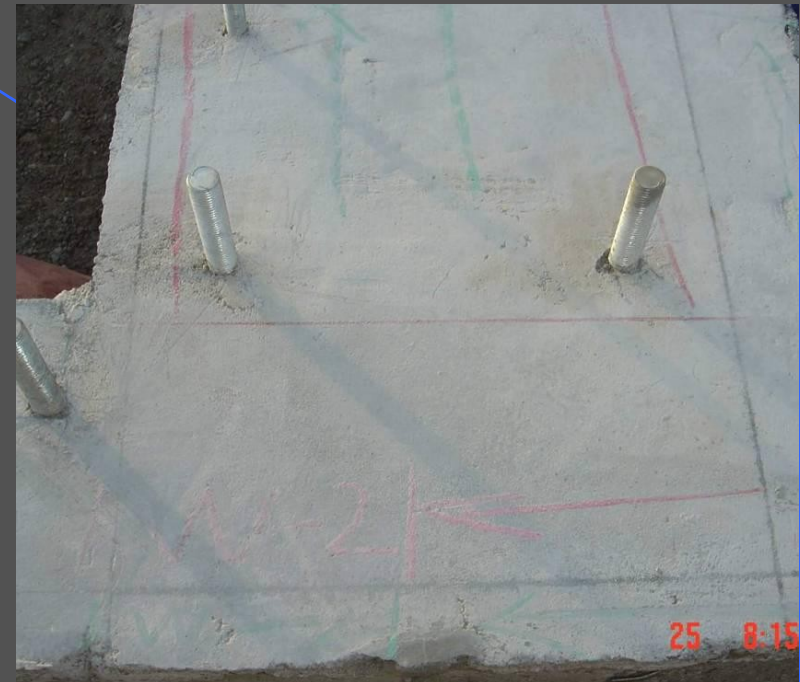
- **Wall panel- production**

All the wall panels are prefabricated in workshop.



● Make the preparation

Confirm the installation line and fix the moisture proof rubber belt



● Install first floor wall panel

Sequence : corner to middle parts



- Connect and fix the wall panel



● Wall hole installation

We should strengthen the panel by light steel joist around wall hole



2nd floor panel

● Production and installation

All the panel are prefabricated in workshop, the sequence is middle parts → corner parts



- Connect the wall panel with floor panel



● Hole in the floor panel

Hole in the floor panel should be strengthened by accessories



- **Shock absorption for floor panel**

Adopt 3mm asphalt for absorption of shock and sound



2nd floor wall panel

● Production and shipment

All the wall panels are prefabricated in workshop



● Anti-pluck fixed accessories

Adopt the bolt to pass through 2nd floor panel and connect the 1st floor wall panel



● Install the door and windows



● Install the stairs

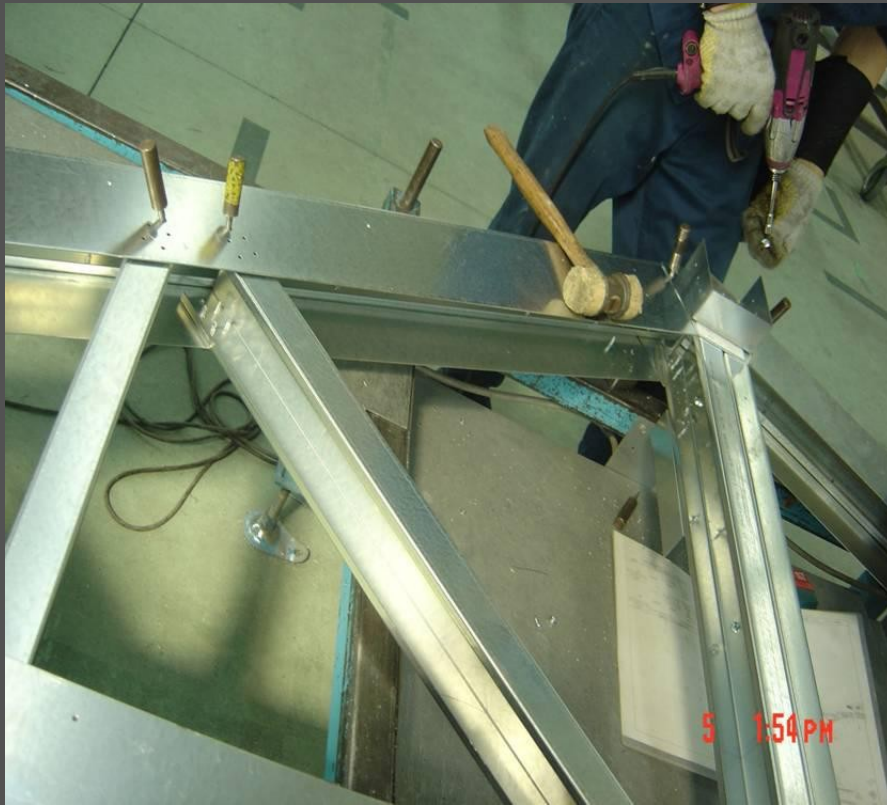
The stairs can adopt wooden structure or steel structure. We can design the store room below stairs.



House frame

● Production and shipment

All the house frame are prefabricated in workshop



● Installation

Confirm the size and location, connect the pillar with frame ends



● Rafter and purling installation

Fix them by connection accessories



● Ridge beam and frame top installation





● Dormant window



Roof

● Roof panel installation

Adopt 15mm OSB Board



● Moisture proof, insulation and Eaves



- Roof panel, waterproof layers and roof tile



Waterproof can be used by SBS material, roof tile can adopt asphalt and so on

● Eaves, air ridge tile, gutter



Exterior Wall

● Structure of exterior wall

Light steel structure,
OSB board, moisture
proof, insulation board,
wooden joist, exterior
wall board



● Moisture proof and insulation



Paint Preservatives above 1m
from foundation

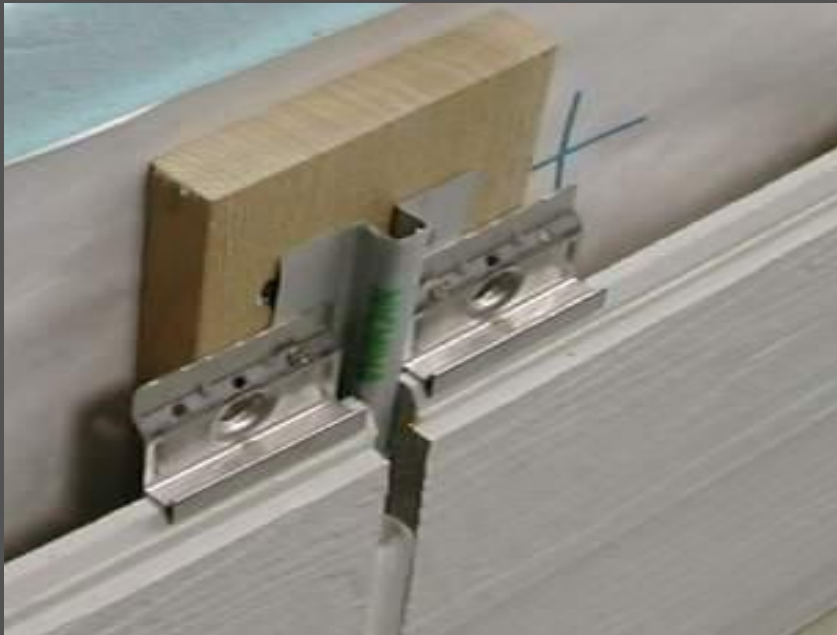
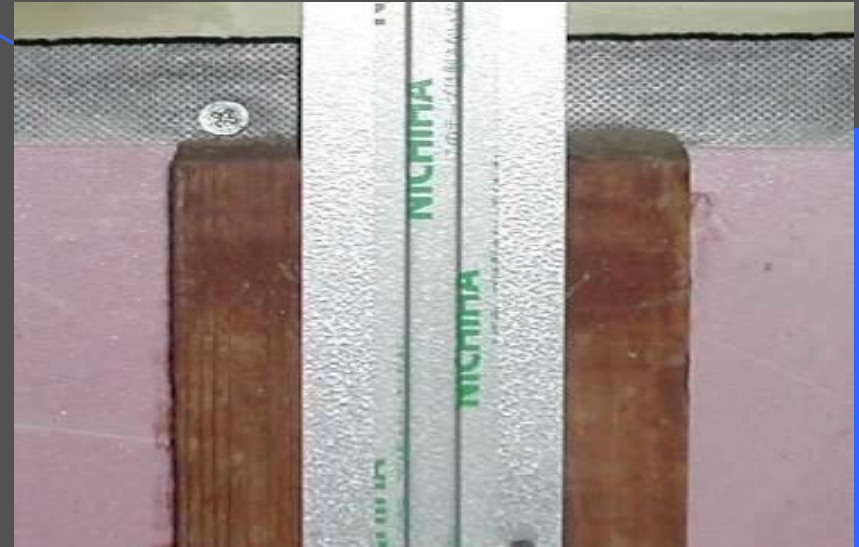


● Waterproof for door and windows



● Exterior wall board and accessories

Installation sequence : from bottom to top, connected by metal accessories.





● Adopt the gum

Firstly paint primer, then adopt the gum. The color of gum is the same as exterior wall panel.



● Balcony waterproof and exterior wall decoration



Indoor decoration

● Inside pipes

Inside and outside pipes
can be installed during the
structure installation

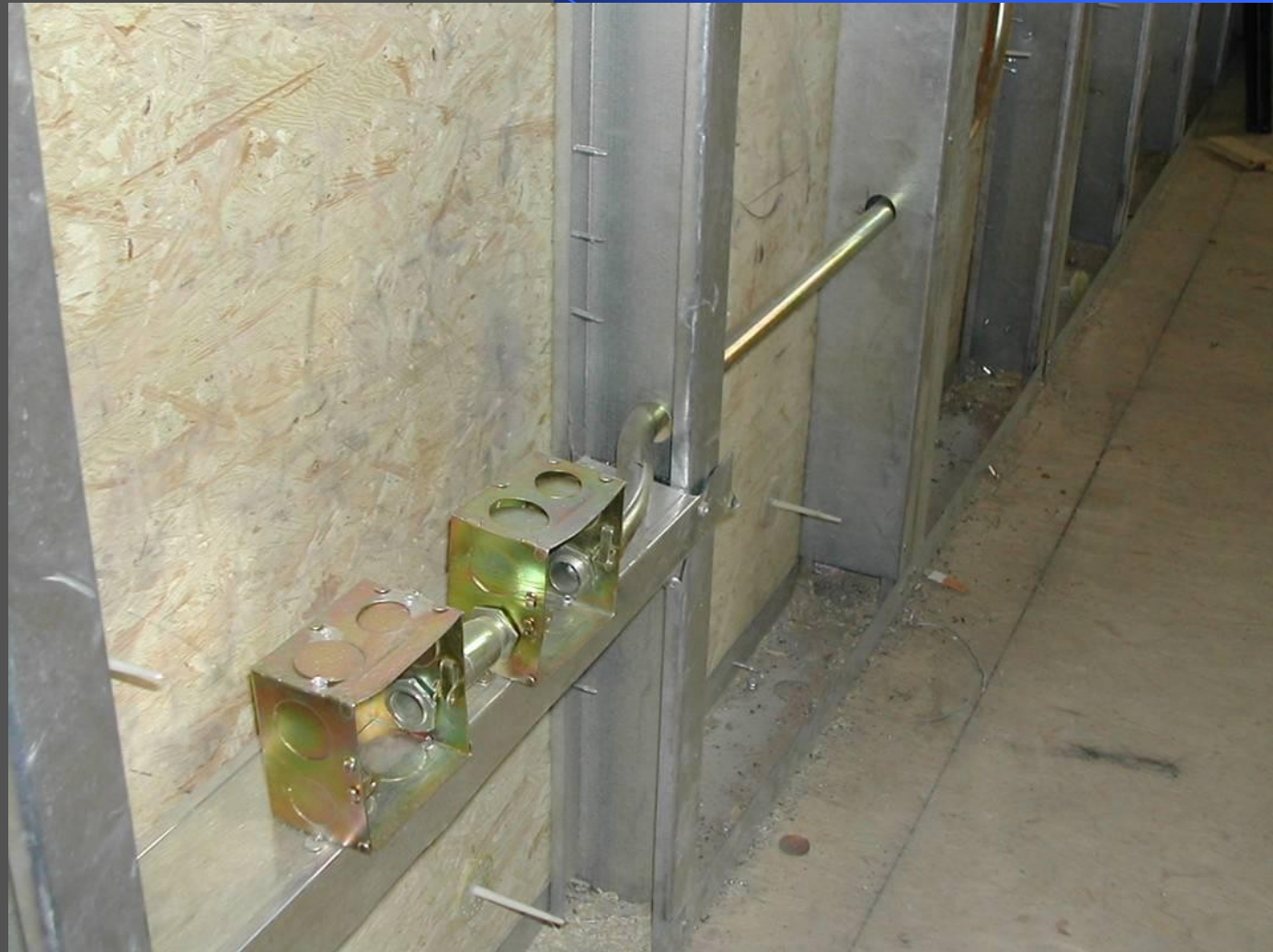


- The pipes pass through the wall and installation method



● Install electricity box

We should strengthen the light steel joist when installing the box



● Insulation for exterior and interior wall

Exterior wall: 75mm fiber glass wool, interior wall: 50mm rock wool



● Pipes of bathroom and waterproof



- Inside partition wall and ceiling



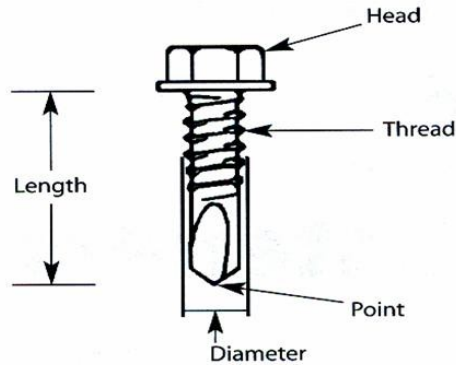
Outdoor

● Plinth, stairs and banisters



Material

● Nails

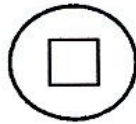


Courtesy: Light Gauge Steel Engineers Association

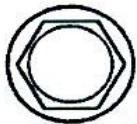
Parts of a screw



Phillips



Square



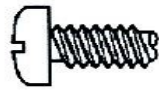
Hex washer



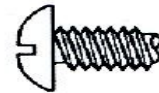
Torx™

Courtesy: Light Gauge Steel Engineers Association

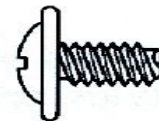
Drive types



Pan head



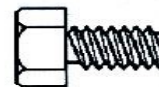
Round head



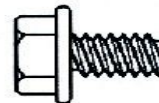
Round washer



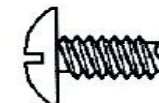
Mod. truss (lath)



Hex head



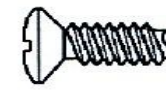
Hex washer



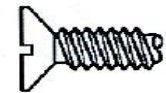
Truss head

Courtesy: Light Gauge Steel Engineers Association

Head types



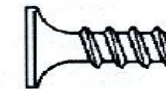
Oval head



Flat head



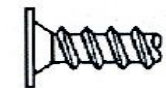
Trim head



Bugle head

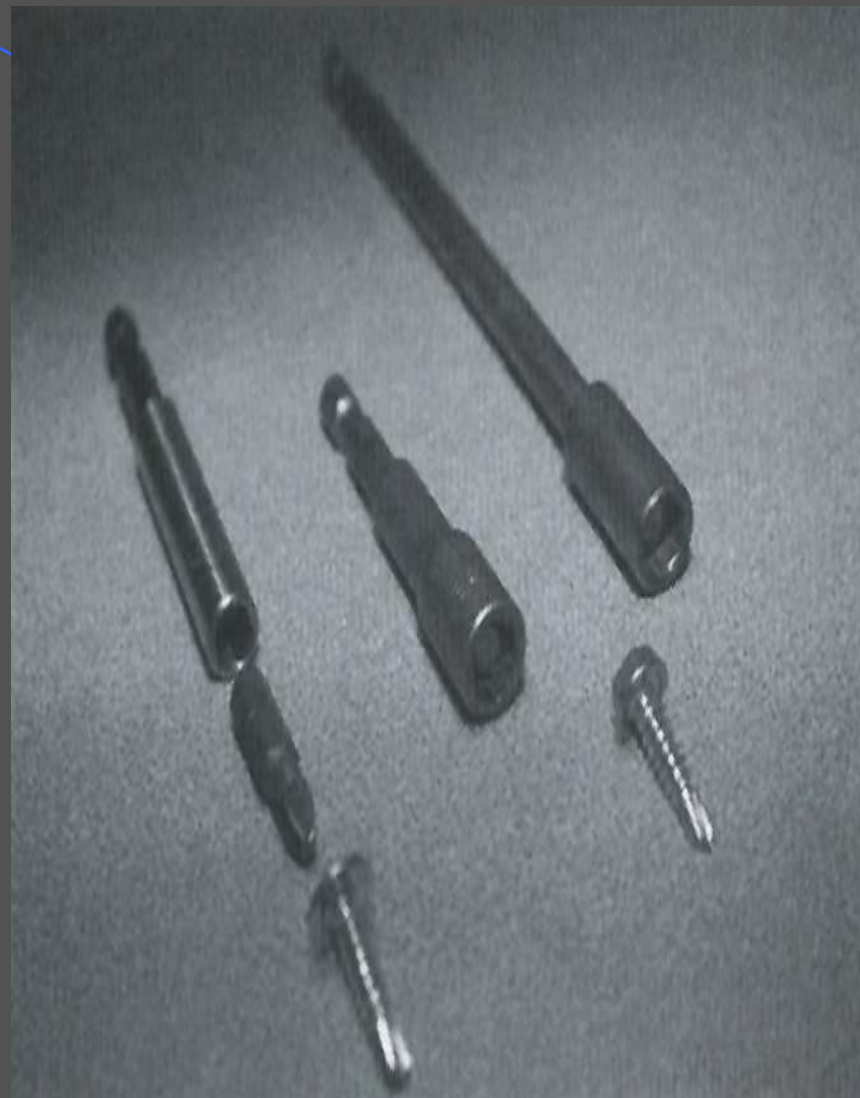
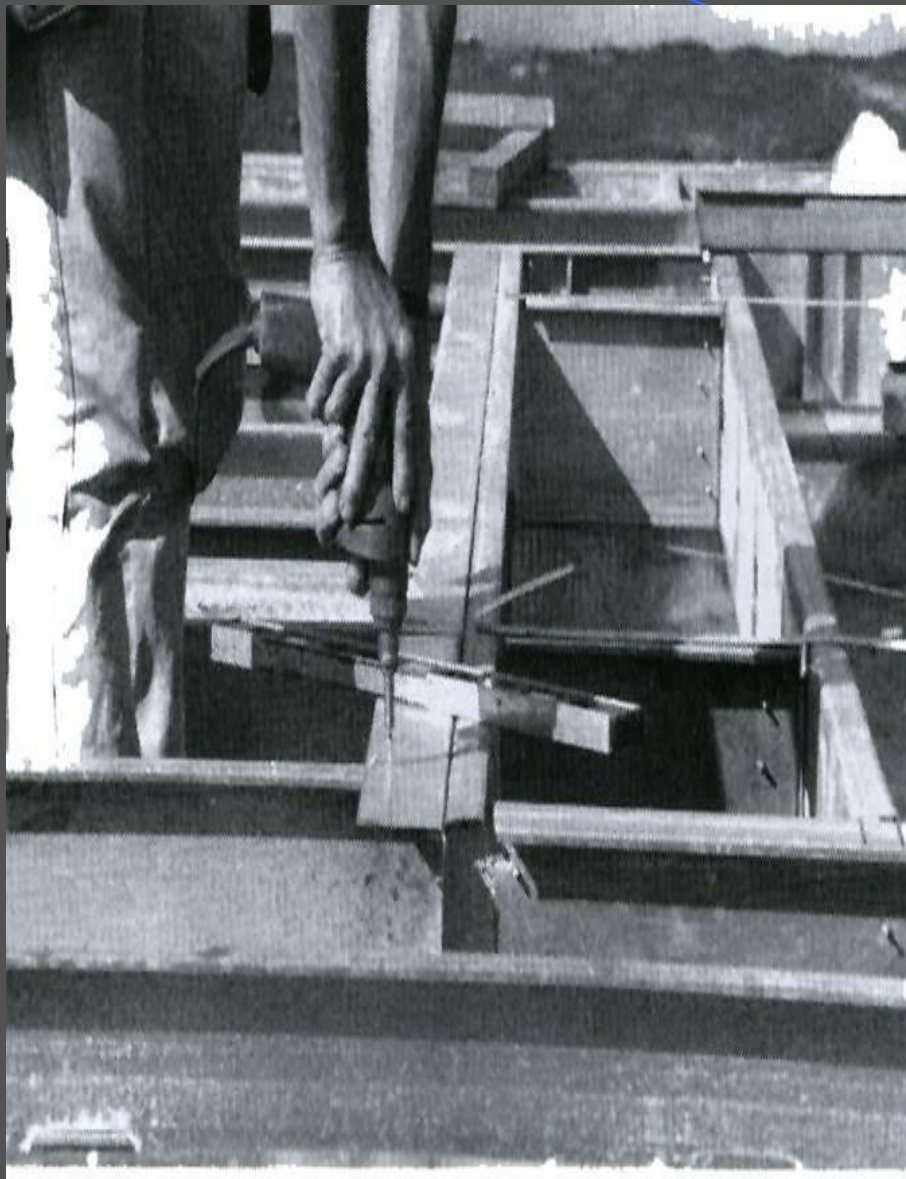


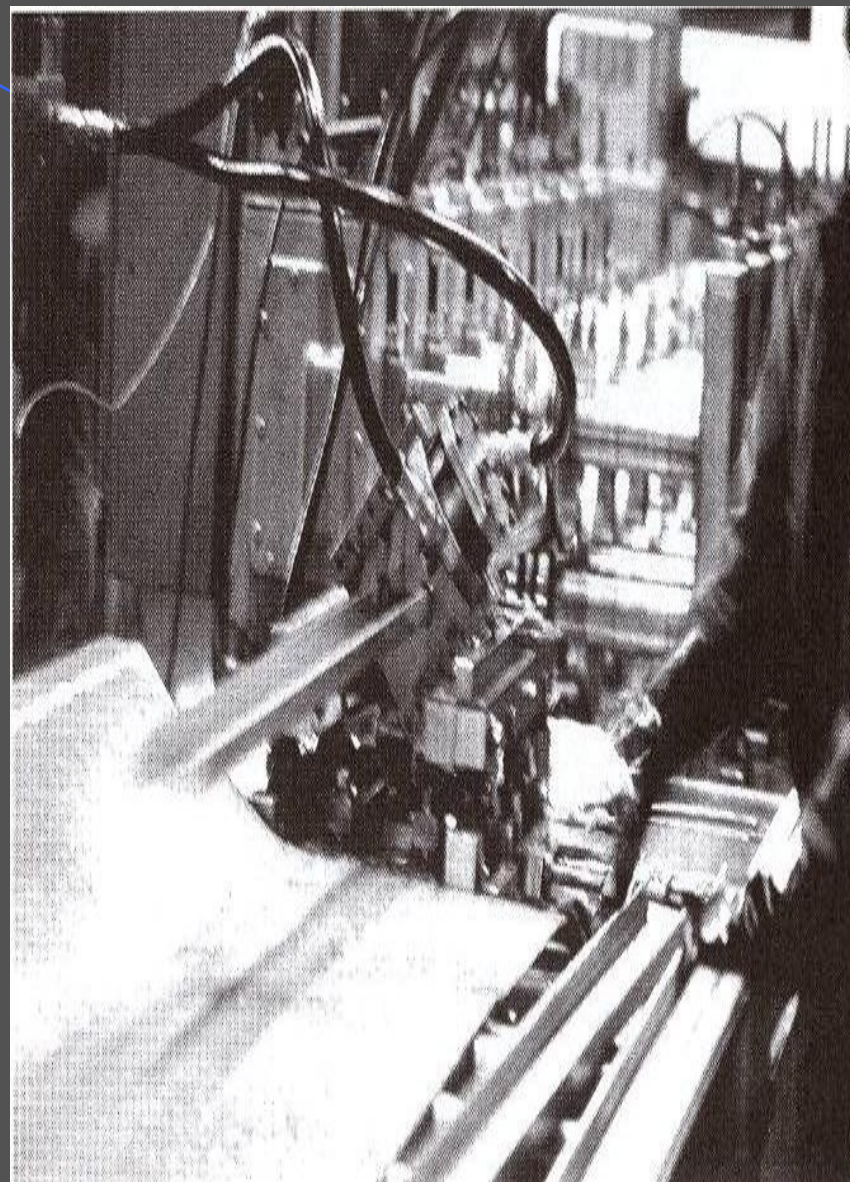
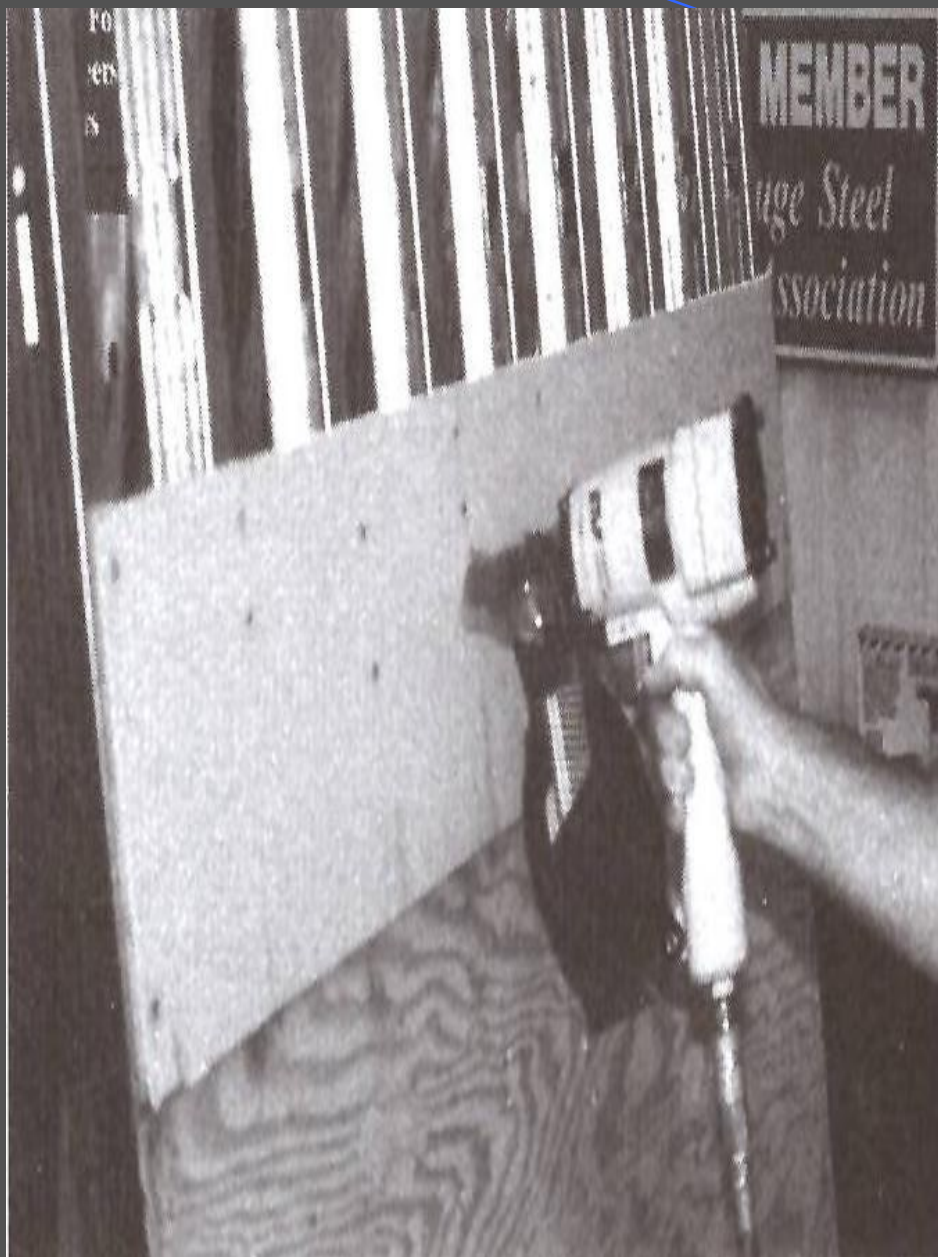
Pancake head



Wafer head

Tools

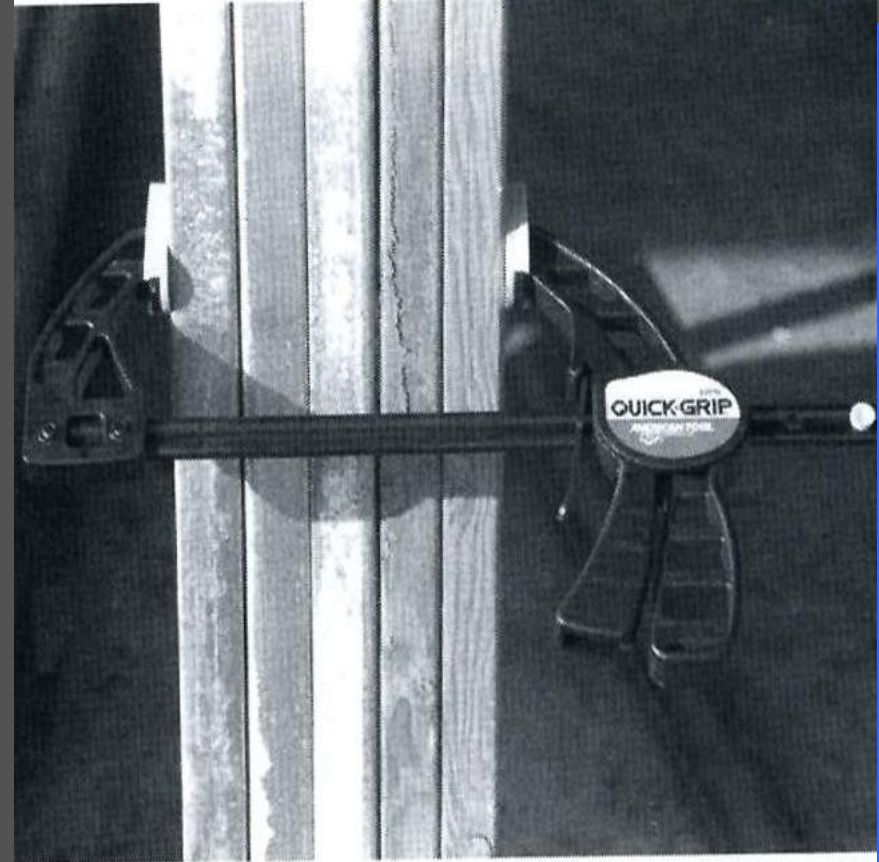




● Bench saw and electrical scissors



- “C” type of Chucking



Thank you